



Driving the Industrial Digital Transformation

II EPROMI

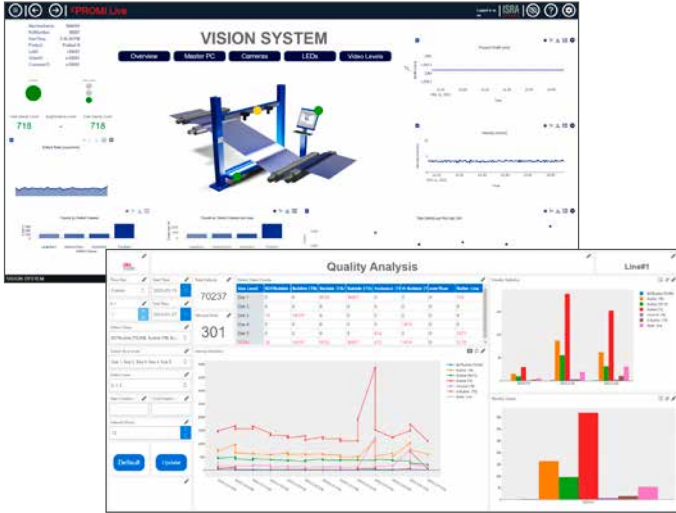
Integrated software solution for data-driven decision making



ISRA
VISION
Part of Atlas Copco Group

Potential in your production data

EPROMI makes the manifold potentials hidden in your production data available at your finger tips and helps you to derive economic decisions along your value chain. Our platform collects and aggregates data from one or multiple inspection systems as well as other sources and presents it through intuitive dashboards featuring a variety of visualizations.



One Solution for All Data Driven Applications

For each industry EPROMI is supplied with a set of application specific pre-configured dashboards, ensuring a quick and seamless setup. To meet your unique requirements dashboards can easily be adapted or customized according to a specific need or use case.

Available solutions include live dashboards that provide real-time data updates and allow you to monitor your systems and produced quality. Additionally, analytics dashboards display processed data and enable you to analyze historical trends, discover patterns or create reports.



Advantages

- simple & self-explanatory user interface
- browser based solution, no client software required
- live status or reports available from anywhere
- threshold management and automatic alarming
- easy integration of third party data

Taking production data analysis to a new level

- **Real-time Visibility**
Gain instant access to live data, allowing you to monitor production processes and identify bottlenecks, inefficiencies, and issues as they occur, enabling quick decision-making.
- **Historical Insights**
Analyze past production data to uncover trends, patterns, and anomalies, which can inform long-term strategies for optimization, resource allocation, and process improvement.
- **Scalability**
Our software can grow with your business, accommodating additional production lines or facilities as needed, ensuring that it remains a valuable tool as your operations expand.
- **Predictive Analytics**
Leverage AI-powered predictive capabilities to anticipate future trends, allowing you to proactively adjust production processes, avoid potential disruptions, and maximize output and profitability.

