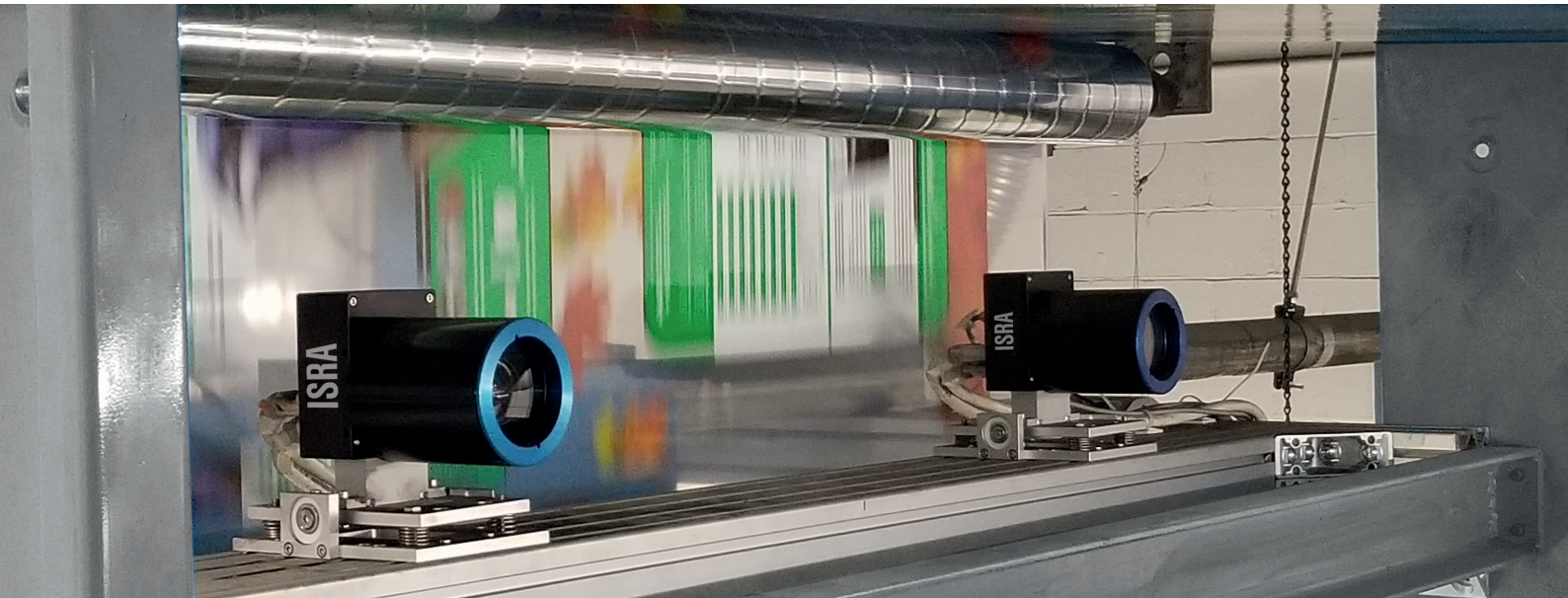


2-in-1: 100% Inspection for Printed and Unprinted Film during Converting: **DualSTAR**



DualSTAR

100% inspection for flexible packaging film (printed and unprinted)

Industry Requirements

- Production at uppermost speeds
- Minimum make-ready time efforts
- Highly efficient production, minimized waste
- Increased quality requirements

DualSTAR – Digital support for your flexible packaging production

- 100% inspection of printed and unprinted film
- Detection of all typical defects occurring during extrusion, lamination, printing process
- Digital assistance to extend the inspection capabilities of the basic setup: for PDF verification, web viewing, inline color measurement
- Additional digital assistance for inline process monitoring tasks
- Tools to get more out of your inspection data
- Optimized image processing for coating and lamination unique in the world

Applications

- Printed and unprinted flexible packaging films
- Personal care & hygienic film printing
- Aluminium packaging for pharma, food & pet food
- Stand-up pouches, doypacks

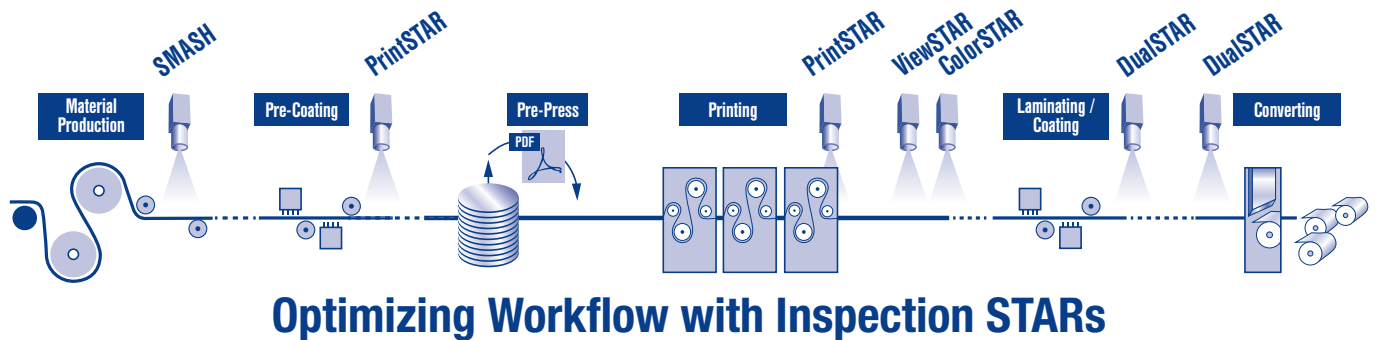
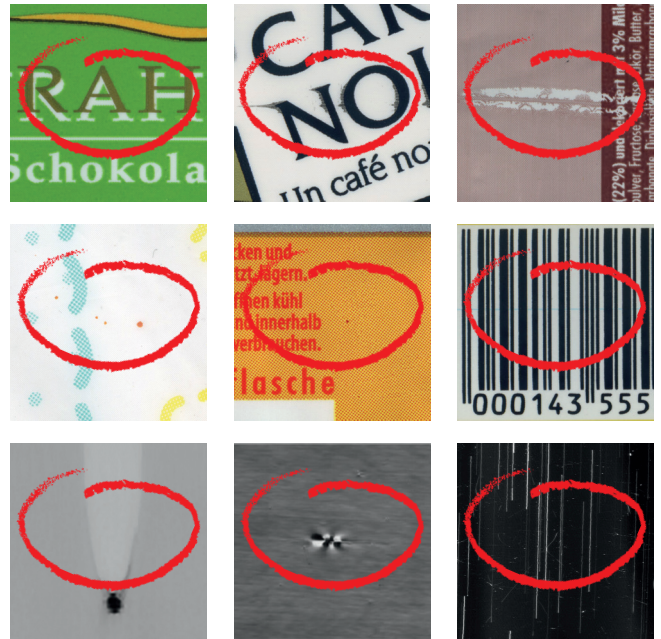
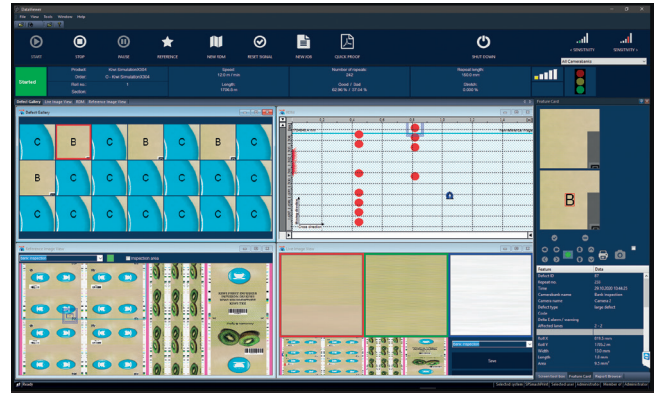
Highlights

- 100% inspection of printed and unprinted with one system (film, paper, foil)
- Most comprehensive supplier of digital assistance tools for first-time-right, stay right, deliver right
- PDF verification – be right with the first impression
- Continuous front-to-back registration, configure additional channels in one system
- ePROMI live:
 - Real-time condition monitoring of process and defect rate data
 - Health monitoring of important system components
- Coating and lamination inspection as an integral part for inspection along the workflow

Think Twice – Think Dual

Features

- High-resolution, high-speed color linescan cameras
- Unique combination of ultrabright LED illuminations in reflection and transmission
- Switching from surface to print inspection
- Tracking of surface and print defects
- Touch-based graphical user interface
- Intuitive job setup & job management
- Assistance for all printing and converting defects: Advanced Streak Detection, Advanced Hazing Detection, Coating Defects, Lamination Defects, Lane Management, gels, contamination, insects, wrinkles, pinholes
- Assistance for value-adding inline processes: coldseal inspection, varnish inspection, front-to-back-registration, print-to-slit-registration for inline slitting
- Dedicated pinhole detection
- Assistance for color monitoring
- Assistance for product/process monitoring: Repeat Length Measurement, Stretch Measurement
- Inspection data stored in database
- Workflow management with review functionalities and waste removal functionalities for the converting department
- Interface to ^ePROMI advanced live data reporting tool
- Increased defect classification
- Dedicated algorithm for defect detection on unprinted web
- Tools for analysis of product & process quality



Optimize your ROI with the technology leader **ISRA**

Headquarter:
 ISRA VISION GmbH
 Industriestraße 14, 64297 Darmstadt, Deutschland
 Tel: +49 6151 948-0
 info@isravisoin.com

www.isravisoin.com

